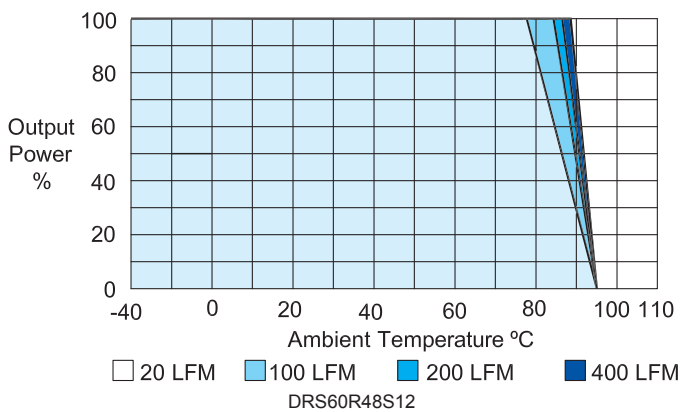
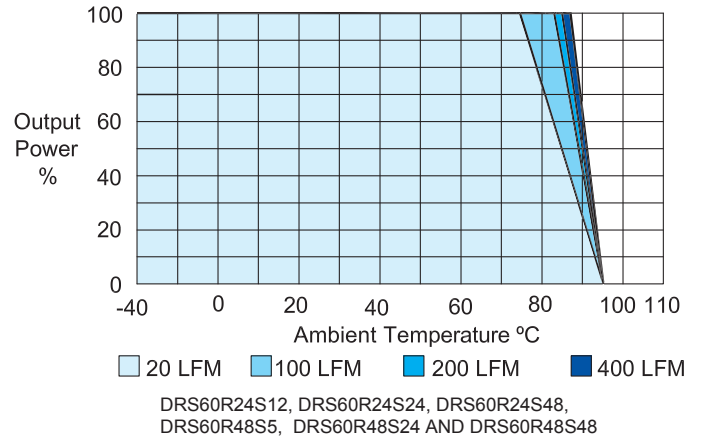
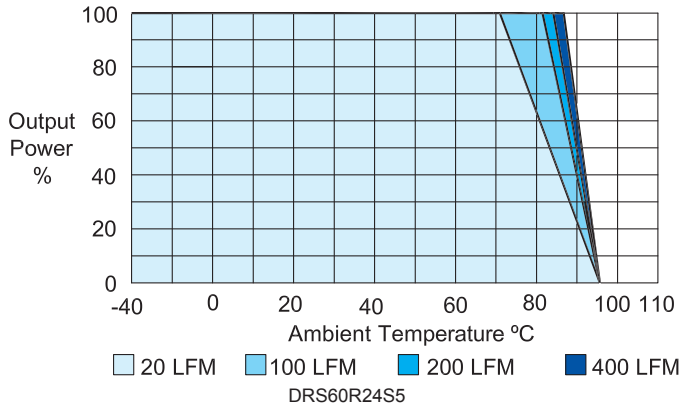


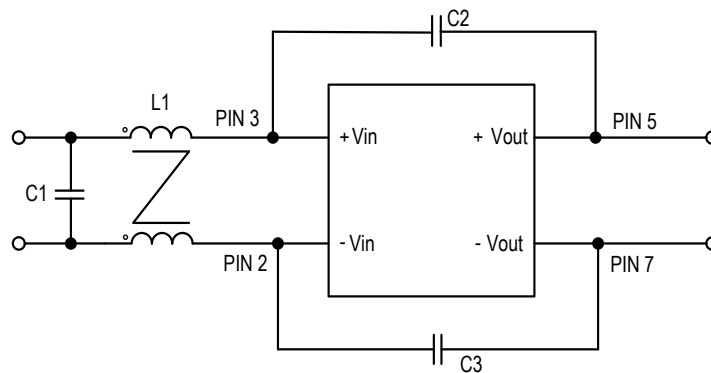
Derating Curves



EMI

Conducted EMI	Meets EN55002 Class A and FCC Part 15 Class A
---------------	---

External components required to meet EN55022 Class A: FCC part 15



Model	L1	C1	C2	C3
DRF40R24SXX	175 μ H / 175 μ H	4.7 μ F 50V	220pF/3KV	220pF/3KV
DRF40R48SXX	175 μ H / 175 μ H	3.3 μ F 100V	220pF/3KV	220pF/3KV